

sedus



se:flex

*Swivel and visitor chair for a
variety of work areas*



Who we are and what we do



Sedus Stoll AG was founded in 1871 and is one of the leading European manufacturers of office solutions. The product range includes seating furniture, such as swivel and visitor chairs, as well as office, conference and contract furniture – all “Made in Germany”.

The company headquarters is located in Dogern on the High Rhine in southern Germany. Another production site is in Geseke, North Rhine-Westphalia. Sedus is a company with a long tradition and 150 years of company history that has repeatedly set standards – in terms of ergonomics, manufacturing processes and sustainability. As a synonym for innovation, technology and aesthetics, Sedus constantly enriches the “office world” with new product ideas and contemporary concepts. Sedus puts a strong focus on current trends and changes in the world of work. New organisational structures and forms of work require flexible, aesthetic furnishings and custom-made solutions that enhance collaboration, communication and movement. A particular emphasis is placed on the health and well-being of the users.

More information is available at www.sedus.com

With our solutions,
we support people
in expressing their
genius at work.





Why se:flex?




se:flex offers optimum comfort – with **upholstery** or **mesh membrane**

The visitor chairs are stackable **up to 5 units** and can be stored in a space-saving way




Mobile in any position due to the **flex elements** between the seat and backrest

With its automatic **weight adjustment**, the se:flex swivel chair adjusts to each user by itself




Made to measure and according to the standard

se:flex with Typ A meets the highest EU standard for adjustable office work chairs



DIN
EN-1335:2020
Typ A ✓

Dynamic and simple:
A swivel chair made for **multi-user workstations**



162 cm / 54 kg
182 cm / 88 kg

se:flex certifications and awards







se: flex

Workstations of tomorrow are being developed today

Modern companies are facing ever increasing rental and ancillary expenses. At the same time, increasing digitalisation and networking are resulting in a new approach to work which no longer requires fixed workstations. The consequence: Expensive office spaces are, on average, only occupied for half the time. Many companies are now responding to this development and are increasingly opting for hybrid working solutions characterised by non-territorial workstation concepts. As a consequence, there has been a rise in the number of multi-user workstations which are used by several employees at different times.

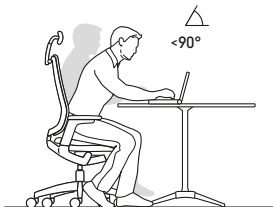


ADJUSTS TO EACH USER

Sitting reinvented: one for all

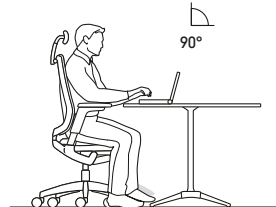
se:flex is a comfortable swivel chair which adjusts automatically to the requirements of the most diverse users, regardless of how tall or heavy they are, without having to make any adjustments.

se:flex ensures a pleasant and ergonomic sitting experience right from the start. It also guarantees that users can immediately focus on the job in hand. Whether for individual work, cooperating or communication: se:flex ideally supports all users in every working situation. The automatic way to sit properly.



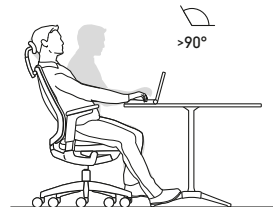
Lean forward and focus

Due to the positive tilt of the seat and backrest, se:flex follows these movements.



Sit upright and concentrate:

A perfectly balanced backrest pressure ensures ideal support at all times.



Lean back and relax

The large opening angle and armrests which follow the chair's movements guarantee a wonderfully relaxed posture.





FORM AND FUNCTION

Fits like a glove

Those who work on projects at multi-user workstations, need to think about many different things. However, certainly not about how they can correctly adjust their swivel chair. se:flex simply does it automatically: The user's body weight and proportions regulate the backrest pressure so that all positions are comfortable.

The seat is also flexible and follows the movements of the pelvis, whilst at the same time, the ergonomically shaped seat pan offers significant support. Together they encourage more movement. Furthermore, the seat can be moved both forward and back to accommodate different leg lengths.



DIN EN-1335:2020 Typ A

The 4D armrest and comfort seat configuration of se:flex complies with the new DIN EN 1335:2020 Typ A office chair standard. The configuration meets the highest demands, is state of the art and fulfils the requirements for a diverse range of users with different needs.

2 backrest options

- Membrane
- Slim upholstery

2 armrest versions

- Multifunction armrests
- 4D armrests

2 upholstery thickness options

- Standard (thickness = 55 mm)
- Comfort (thickness = 65 mm)



The armrests support in every position and with every movement. Upon leaning back, the armrests move in sync and provide optimal support, even when, for example, using mobile devices.

The flex element offers freedom of movement in all directions. It joins the backrest to the rest of the frame and allows the backrest to follow the user's spontaneous movements automatically and in all directions. The patented flex element facilitates a three-dimensional sitting experience and offers comfort and support in every situation.





FORM AND FUNCTION

We've got your back – with soft upholstery

se:flex offers all users an ergonomic sitting experience due to, in part, the comfortable mesh membrane in the backrest. This experience is further enhanced with the slimline yet soft upholstery which harmonises perfectly with the overall design. Furthermore, the mesh membrane and slim upholstery are available in a range of attractive colours to allow you to customise your own se:flex.



Mesh membrane – Single-coloured

The light, transparent mesh membrane of the backrest is available in five different colours. The front and back differ only in terms of their structure.



Slim upholstery – Two-coloured

The colours and upholstery fabrics for the front can be individually selected from the entire Sedus fabric collection; the back is always in anthracite.



Intelligent gas spring action

Sedo-lift III

The robust seat height adjustment is virtually wear-free, even when used by a variety of users. In its lowest position, it also ensures soft, back-friendly cushioning when sitting down. Furthermore, it comes with a 30-year guarantee.

FORM AND FUNCTION

Universal in application

For meeting rooms, lounge and waiting areas or in the home office: se:flex brings lightness, can be excellently combined with other furniture and perfectly meets the requirements that are placed on it. From elegant and timeless to eye-catching and modern, its colour variations cover the entire spectrum. Designed to create a look that fits into any workspace.







VISITOR CHAIR

Universal in application

Due to its versatile design options, the se:flex visitor chair is universally and flexibly applicable. Depending on individual preferences, it is possible to choose between a four-leg chair and a cantilever chair, with or without armrests. As well as a wide choice of frame colours, we also offer both a mesh backrest or a slim upholstered version. Regardless of which version of the visitor chair you choose: It welcomes everyone.

For space-saving storage, the four-leg chair is stackable up to five units. A transport trolley is also available as an option.



VARIATION AND DIVERSITY

All-round comfort

With numerous combination options, se:flex fulfils almost every wish: timeless and light as well as modern and chic. With exactly the colours and materials that fit best.



Slim upholstery



Membrane



Slim upholstery



Membrane

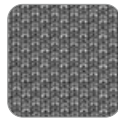
Slim upholstery

Front: can be chosen from the Sedus fabric collections
Back: plastic in anthracite

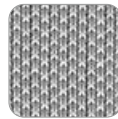
Membrane



Black



Mid grey



Light grey



Matcha



Sand

Frame and armrests



Black



Pale grey

Base



Black



Pale grey

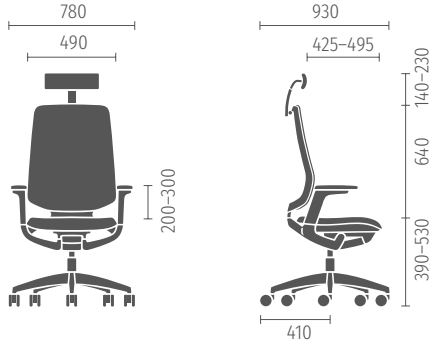


Chrome/polished

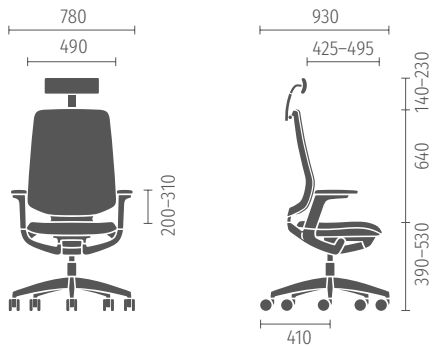


White aluminium
(only for visitor chairs)

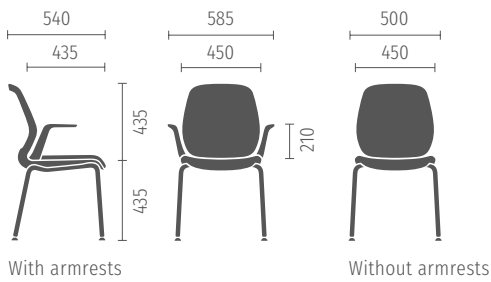
Swivel chair with multifunction armrests



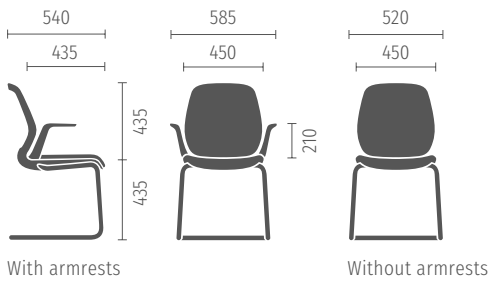
Swivel chair with 4D armrests (DIN EN-1335:2020 Type A)



Visitor chair (4-leg)



Visitor (cantilever) chair



As diverse as its surroundings

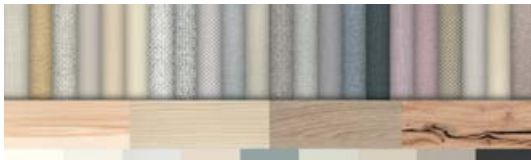
A harmonious working environment contributes significantly to well-being and productivity. Well-conceived furnishings, pleasant fabric and material combinations as well as a choice of colour accents are key factors for achieving this goal. Whether Smart Balance, Soft Being, Urban Living or Multi Creation – se:flex swivel and visitor chairs can easily be adapted to any of these colour schemes.

Do you need support in planning and implementation?

The experts from Sedus Workplace Consulting are looking forward to assisting you in designing your modern smart office. From analysing the floor plan and designing the concept to choosing the colour from the Sedus Colour Cookbook – everything comes from a single source.

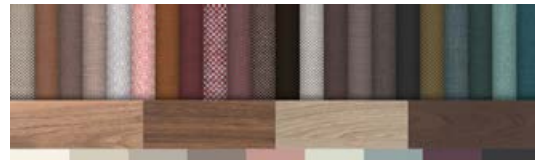
Smart Balance

light, reduced, calm, structured, functional, technical



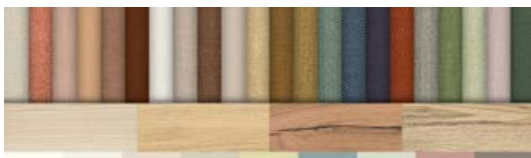
Urban Living

comfortable, respectable, elegant, urban, intense, timeless



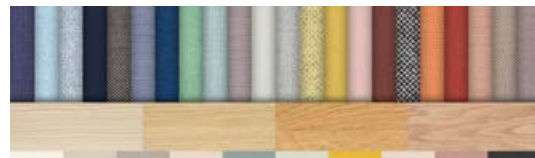
Soft Being

gentle, calm, balanced, natural, inviting, regenerative

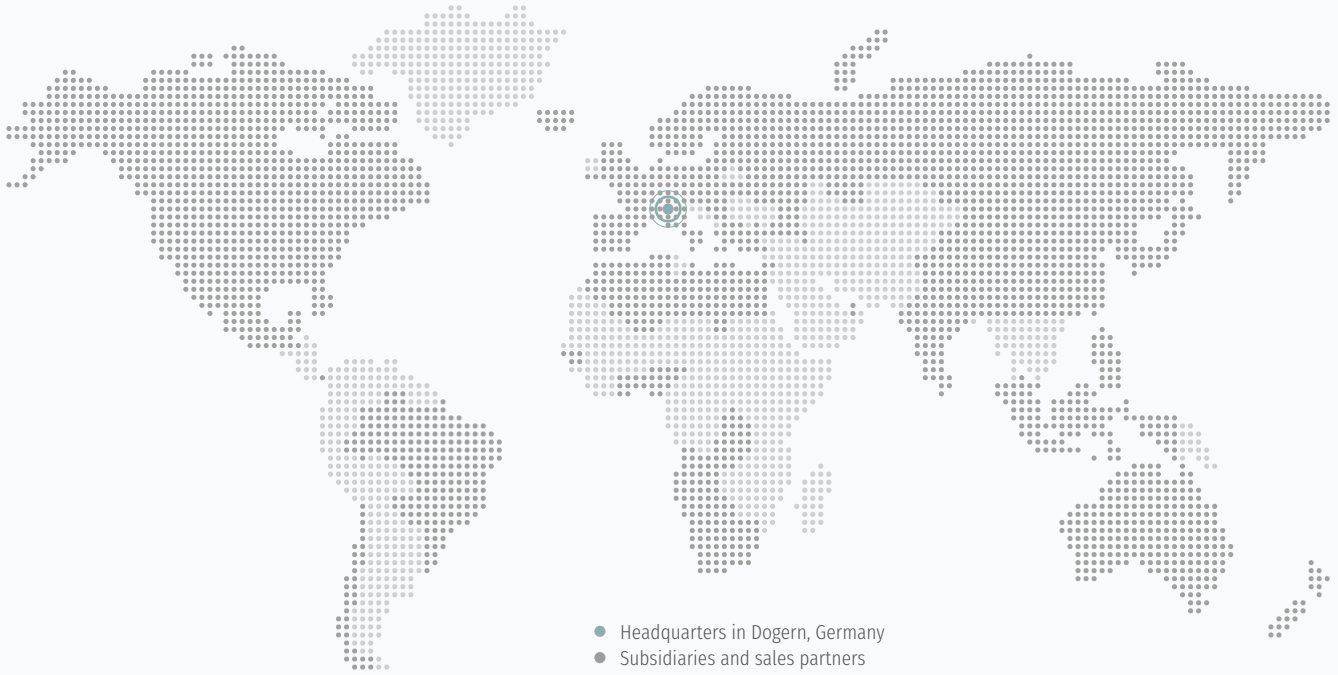


Multi Creation

motivating, inspiring, creative, dynamic, active, open, free



On site worldwide



Visit us in one of our showrooms

- Austria: Vienna
 - Belgium: Erembodegem-Aalst
 - France: Paris
 - Germany: Berlin, Dogern, Geseke, Hamburg, Munich, Rhine-Main
 - Italy: Cadorago
 - Netherlands: Zoetermeer
 - Spain: Madrid
 - Switzerland: Rickenbach
 - United Arab Emirates: Dubai
 - United Kingdom: London
-



Would you like to learn, read and see more about Sedus?

Visit us on our social media channels!

“se:flex

*adjusts automatically to every user
and simultaneously offers the full comfort
of a work chair with the easiest handling.”*

Sedus Design Team



05.2023 | 84.0516.212 | Subject to change

www.sedus.com